



VINTAJ®

November 2015

vintaj.com



NEW!

Inspired by artisan jewelry throughout the ages, our new exclusive Designer Series line was created with the designer in mind and is not available in major retailers.



P020 Looped Layering Window



RB001 Scrolled Ring



BB005 13mm One Size 18ga Layering Bangle



F022 Repousse Wrapping Filigree



F020 Regalia Layering Window



FL370 Diamond Swirls Wrapping Filigree



F025 Domed Scrollwork Layering Window



BB004 36mm One Size 18ga Layering Bangle



F023 Deco Layering Filigree



C4H50 Filigree Base



P022 Cicada



F021 Scrolled Layering Window



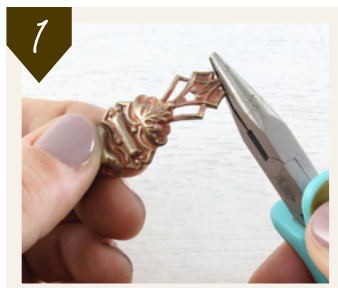
F024 Round Layering Filigree



P021 Butterfly Element



LAYER IT UP! DISCOVER STUNNING COMBINATIONS THAT ARE SURE TO INSPIRE ENDLESS DESIGNS.



Use chain nose plier to simply form filigree into the shape of bangle.



Apply E6000 to the back side of filigree, in the center opening, flat areas and ends.



Position the filigree centered on the bangle. Add binder clips to each side of layered pieces. Allow to dry for a few hours.



Use a tooth pick to apply a small amount of E6000 to the back side of filigree. Line up filigree with top loop of pendant.



Add binder clips to top and bottom of layered pieces to hold in place. Allow to dry for a few hours.



check out our SALE ITEMS!

Build a beautiful foundation for your jewelry with select Vintaj findings!

30% OFF!

